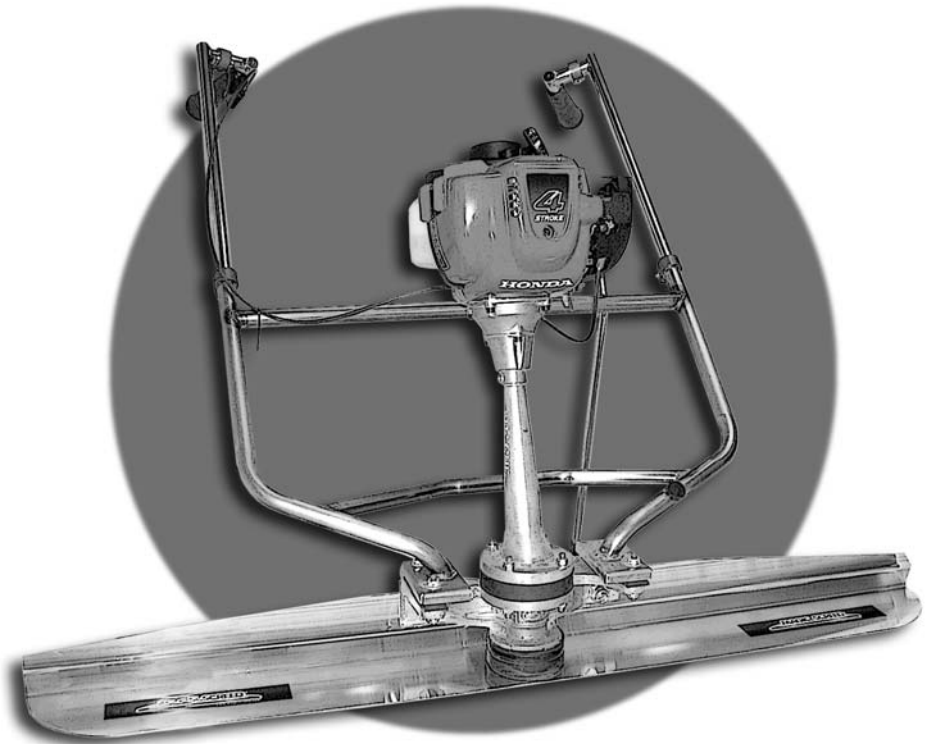


MAGIC SCREED®

www.magicscreed.com



PARTS BOOK & OWNER'S MANUAL

SAFETY

- 1- Read and understand the owner's manual before operating or servicing the screed
- 2- Have a first aid kit available in case someone gets injured
- 3- Wear the appropriate safety gear (according to your local requirement)
Suggested list of protection gear



Hardhat



protective boots



protective goggles



gloves



hearing protection

- 3- **Carbon monoxide hazard:** Exhaust gas contains poisonous carbon monoxide. Avoid inhalation of exhaust gas. Never run the engine in a closed or confined area without proper ventilation

⚠ WARNING
Carbon monoxide gas is toxic. Breathing it can cause unconsciousness and even kill you.
Avoid any areas or actions that expose you to carbon monoxide.



- 4- **Burns from hot parts:** Let the engine and exhaust system cool before touching.
- 5- Do not put your hands on any vibrating or moving parts.
- 6- **Refuelling:** refuel with care. Gasoline is extremely flammable, and gasoline vapor can explode. *Refuel outdoors, in a well-ventilated area, with the engine stopped.* Never smoke near gasoline, and keep flames and sparks away. Always store gasoline in an approved container. If any fuel is spilled, make sure the area is dry before starting the engine.

⚠ WARNING
Gasoline is highly flammable and explosive.
You can be burned or seriously injured when handling fuel.
<ul style="list-style-type: none">• Stop the engine and keep heat, sparks, and flame away.• Handle fuel only outdoors.• Wipe up spills immediately.

Use unleaded gasoline with a pump octane rating of 86 or higher.

Transporting: if the engine has been running, allow it to cool off for at least 15 minutes before loading the screed on a transport vehicle. A hot engine and exhaust system can burn or can ignite some materials.

SERVICE, CLEANING AND OPERATION

HONDA ENGINES:

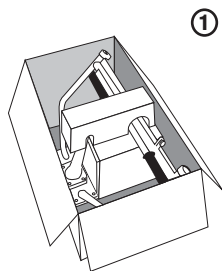
Refer to your Honda owner's manual.

1. Before cleaning, servicing or repairing your screed, stop the engine and wait for any moving parts to stop then remove the spark plug cap.
If the engine has been running, allow it to cool off for at least 15 to 20 minutes before cleaning with water.
2. **Grease:** the housing weight must be greased approximately every ten hours of operation. Do not *over grease*. An over flow **(1)** is located at the opposite side of the grease fitting **(2)** and must be cleaned before each greasing to prevent pressure from being applied by the grease on the bearing. Any such pressure could seize the bearing or damage your housing weight.
3. Your screed should be disassembled frequently for proper cleaning in order to prevent any concrete build-up that could **break or prematurely damage** your equipment. *Warranty does not cover damage or performance problems on your screed resulting from neglected maintenance or cleaning.*
4. Take apart the blade and clean any concrete accumulation.
5. Take apart the housing weight from the handles and clean the concrete underneath the handles and in the housing shaft.
6. Take the rubber cover off and clean any concrete or grease accumulation to allow the counterweight to move freely.
7. Put everything back together making sure that the plastic spacers are between the blade and the housing weight. Tighten the blade following the assembly procedure to 85 to 100 Lb.-Ft. torque it is very important that the plastic spacers are always between the vibrator and the blade.

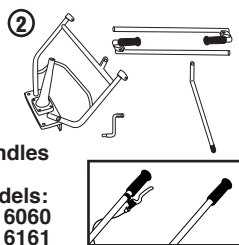


MAGIC SCREED ASSEMBLY & STARTING PROCEDURE

- 1- Take the protective foam out of the box.



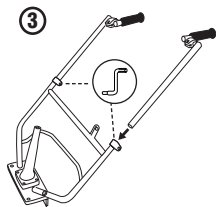
- 2- Remove both adjustable handles and the base handle (assembled with vibrator and housing shaft).



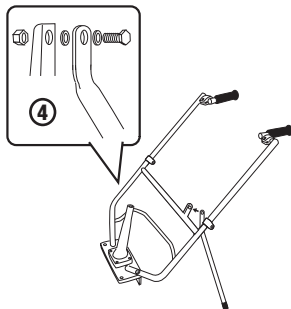
Handles for models: HD 6060 HD 6161

- 3- Insert the adjustable handles into the base handle (throttle control on the right side) and tighten the collar. Do not overtighten.

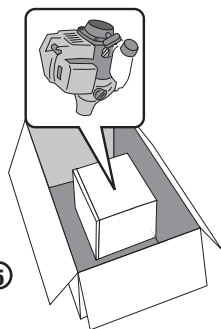
Note: If ordered with 360° adjustable handles, adjust and tighten to comfort.



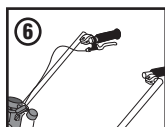
- 4- Stand
Place the stand with the flat side against the support, ensuring that one of the nylon washers is on each side of the stand (follow the drawing).



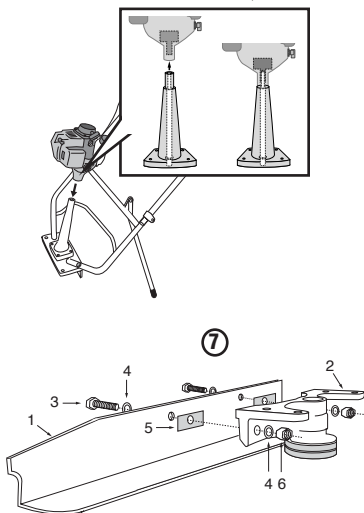
- 5- Assembly of the engine
Remove the engine from the protective foam. Place the engine on the housing shaft, make sure that the driveshaft is inserted in the clutch adaptor, and tighten. (Do not overtighten) (See drawing).



- 6- Put the rounded end of the throttle cable into the throttle control and adjust so that the rubber handle grip becomes the stopper.



- 7- Assembly of the blade
Assemble the blade (1) on the screed vibrator (2) in the following order: bolts (3), washers (4), blade (1), plastic spacers (5), washers (4), nuts (6). (See drawing). Tighten all the above at approximately **85 to 100 Lbs. torque. It is very important that the plastic spacers are always between the vibrator and the blade.** They are used as a cushion and prevent blade damage. If both are not in place, this could void the warranty. Replacement plastic spacers are available at your Magic Screed dealer.



Warning logos on your screed

Logo, explanation and label positioning:

1- Description label; left handle

2- Hot label; near exhaust system

MAGIC SCREED 630 RUE DE L'ARGON Québec, (Québec) CANADA, G2N 2J6	MODEL	HD 7070	ENGINE ASSY.
	YEAR	2006	MASS 13.70 KG
	ENGINE	HONDA	RPM 8500
	35CC	GX 35 TMS3	KW 1.1 KW



3- Appropriate safety gear;
left handle

4- Stop engine before refuelling;
Gas tank



Honda

Model HD 6060, HD 6161, HD 7070, HD 7171 with *Honda engine*

Before starting your Honda engine, consult the **Honda owner's manual** supplied with your screed. **Keep this manual handy.**

Notes:

- The Honda engine on your screed is a 4-cycle engine. It requires unleaded gasoline. Consult your *Honda owner's manual, page 8.*
- The on/off switch is located on the left-hand side, under the carburator of the engine supplied with your screed.
- Warning:** there is no oil in the engine. To check oil level, consult the **Honda owner's manual, page 9.**

The complete starting procedure is in your Honda owner's manual, pages 4.

HONDA ENGINE

on/off switch



MAGIC SCREED POWER UNITS

- HD 6060 HONDA ENGINE WITH ADJUSTABLE HANDLES ON HEIGHT ONLY
- HD 6161 HONDA ENGINE WITH ADJUSTABLE HANDLES ON HEIGHT ONLY AND EXTRA VIBRO MOUNTS
- HD 7070 HONDA ENGINE WITH ADJUSTABLE HANDLES ON 360°
- HD 7171 HONDA ENGINE WITH ADJUSTABLE HANDLES ON 360° AND EXTRA VIBRO MOUNTS



BLADES

FITS ON ALL POWER UNITS

FT	M	#
4'	1.22	2050
6'	1.80	2051
8'	2.44	2052
10'	3.00	2053
12'	3.66	2054
14'	4.27	2055
16'	4.88	2056



*Other sizes available...

**Table of handling information
Weight & length of different components and assembly**

BLADES	2050		2051		2052		2053		2054		2055		2056	
LENGTH	Feet	Meter	Feet	Meter	Feet	Meter	Feet	Meter	Feet	Meter	Feet	Meter	Feet	Meter
		4	1,22	6	1,8	8	2,44	10	3	12	3,66	14	4,27	16
WEIGHT	LB	KG	LB	KG	LB	KG	LB	KG	LB	KG	LB	KG	LB	KG
	6.7	3	10.1	4.6	13.4	6.1	16.8	7.63	20.2	9.16	23.5	10.68	26.9	11.77